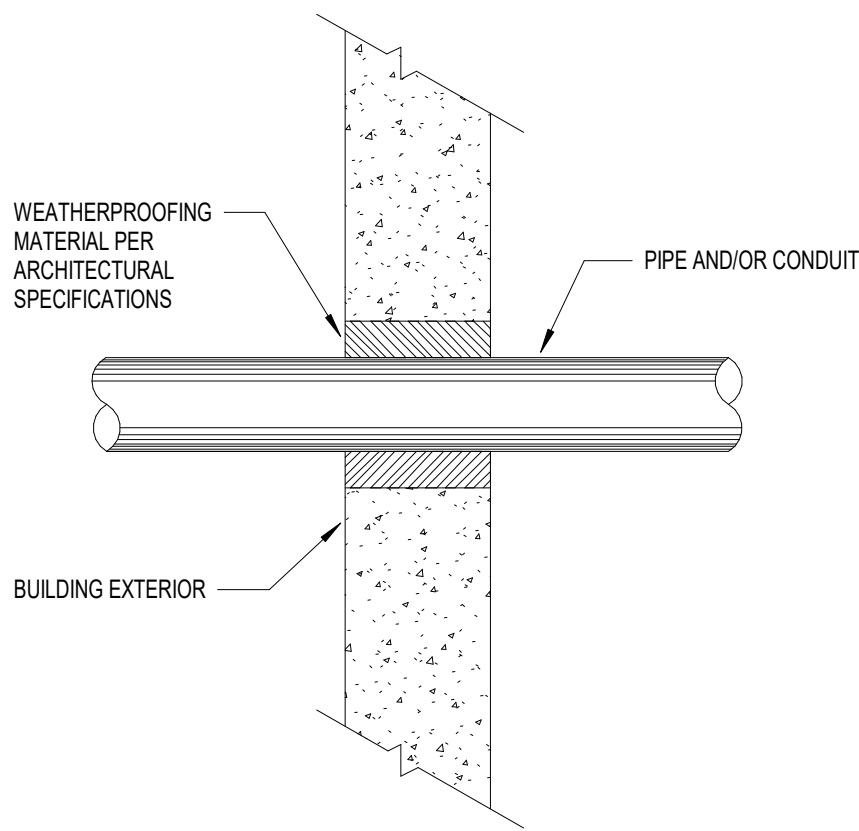
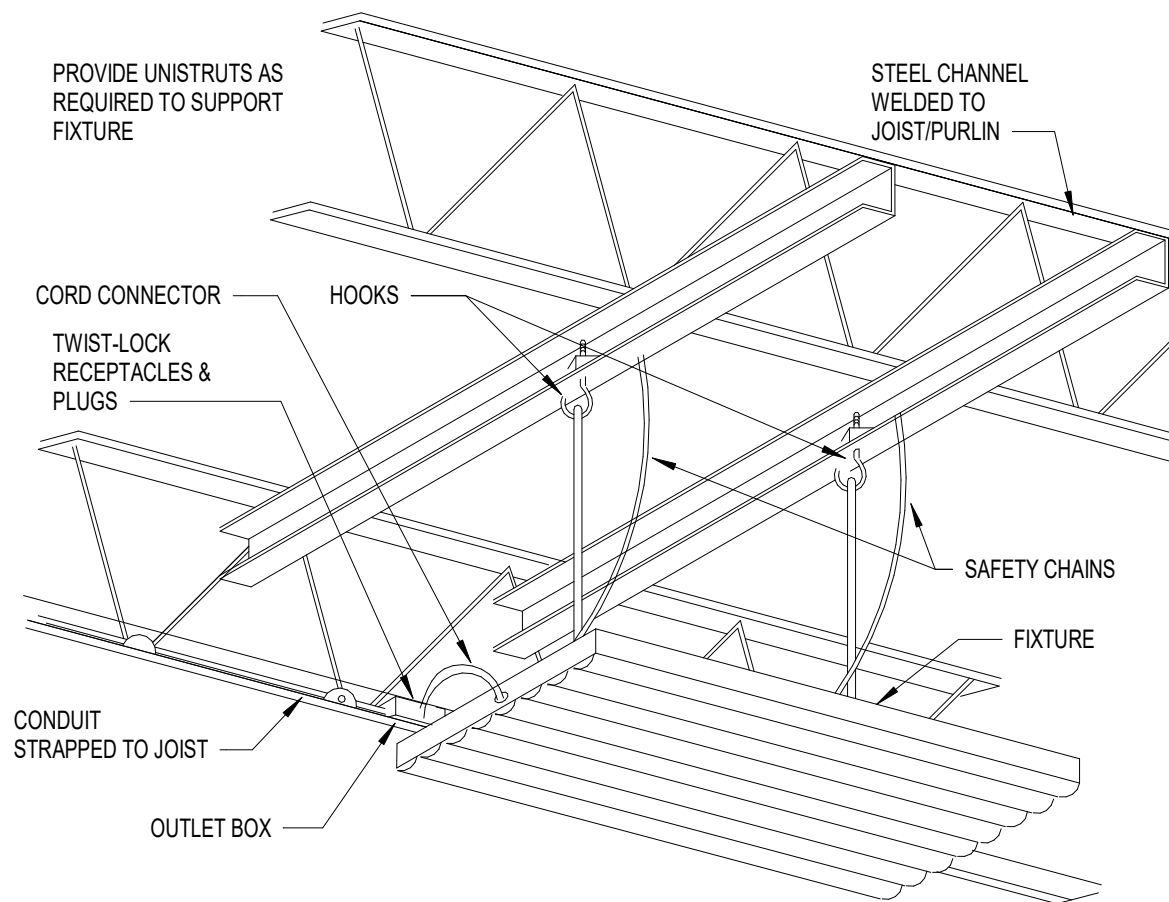


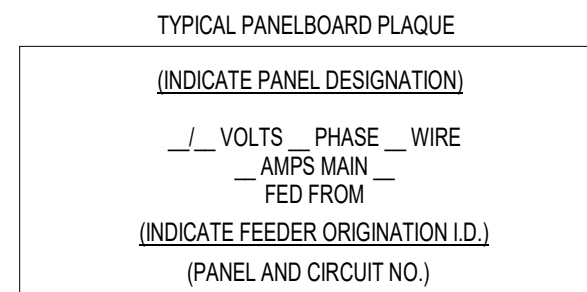
1 | **DETAIL - CONDUIT SUPPORT**
N.T.S.



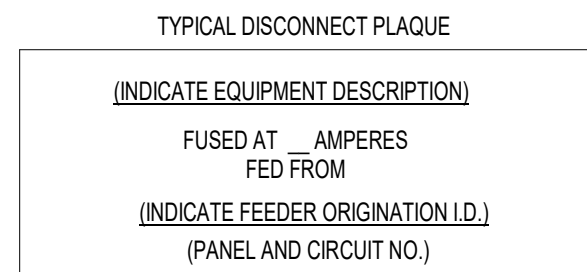
3 | **DETAIL - PIPE AND/OR CONDUIT PENETRATION**
N.T.S.



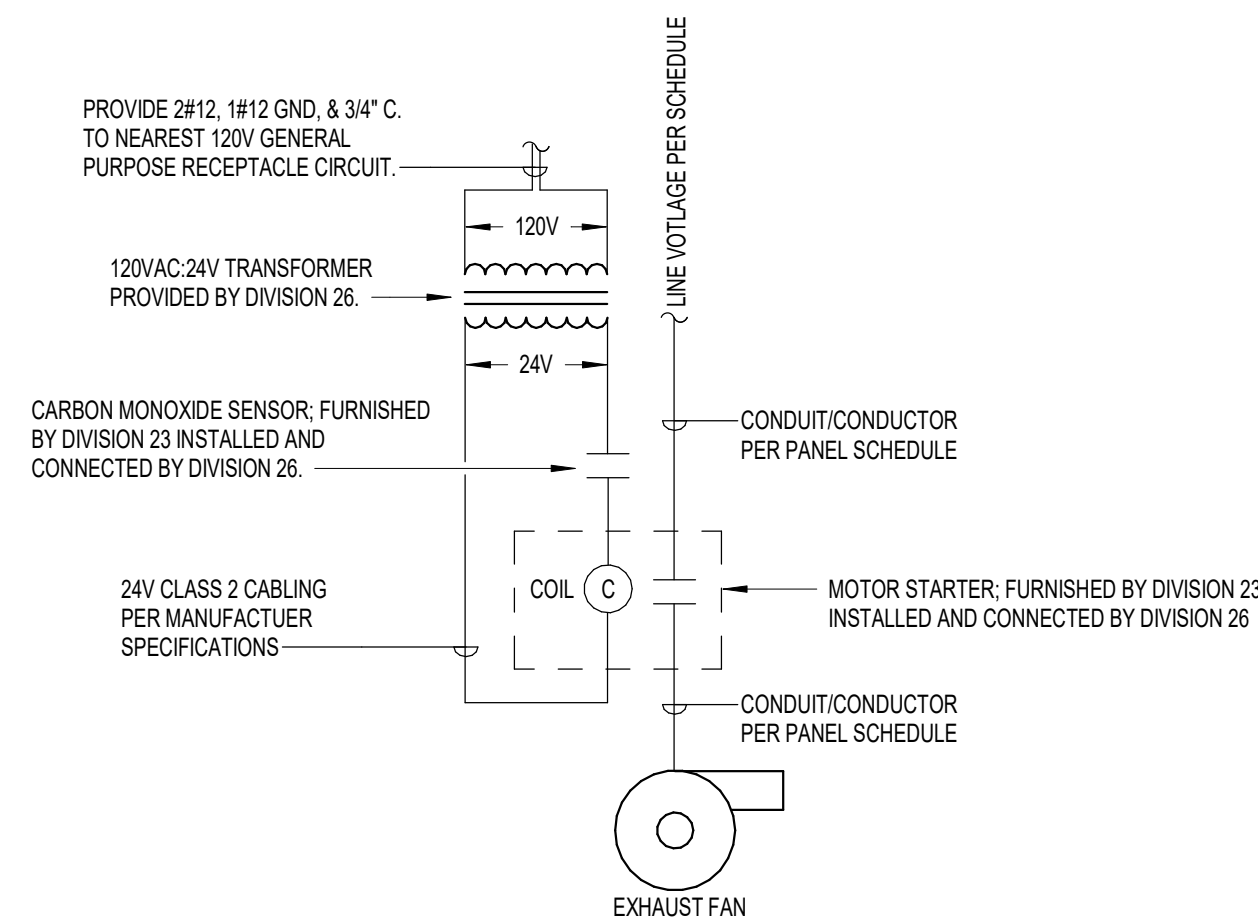
5 | **DETAIL - HIGH-BAY LED FIXTURE MOUNTING**
N.T.S.



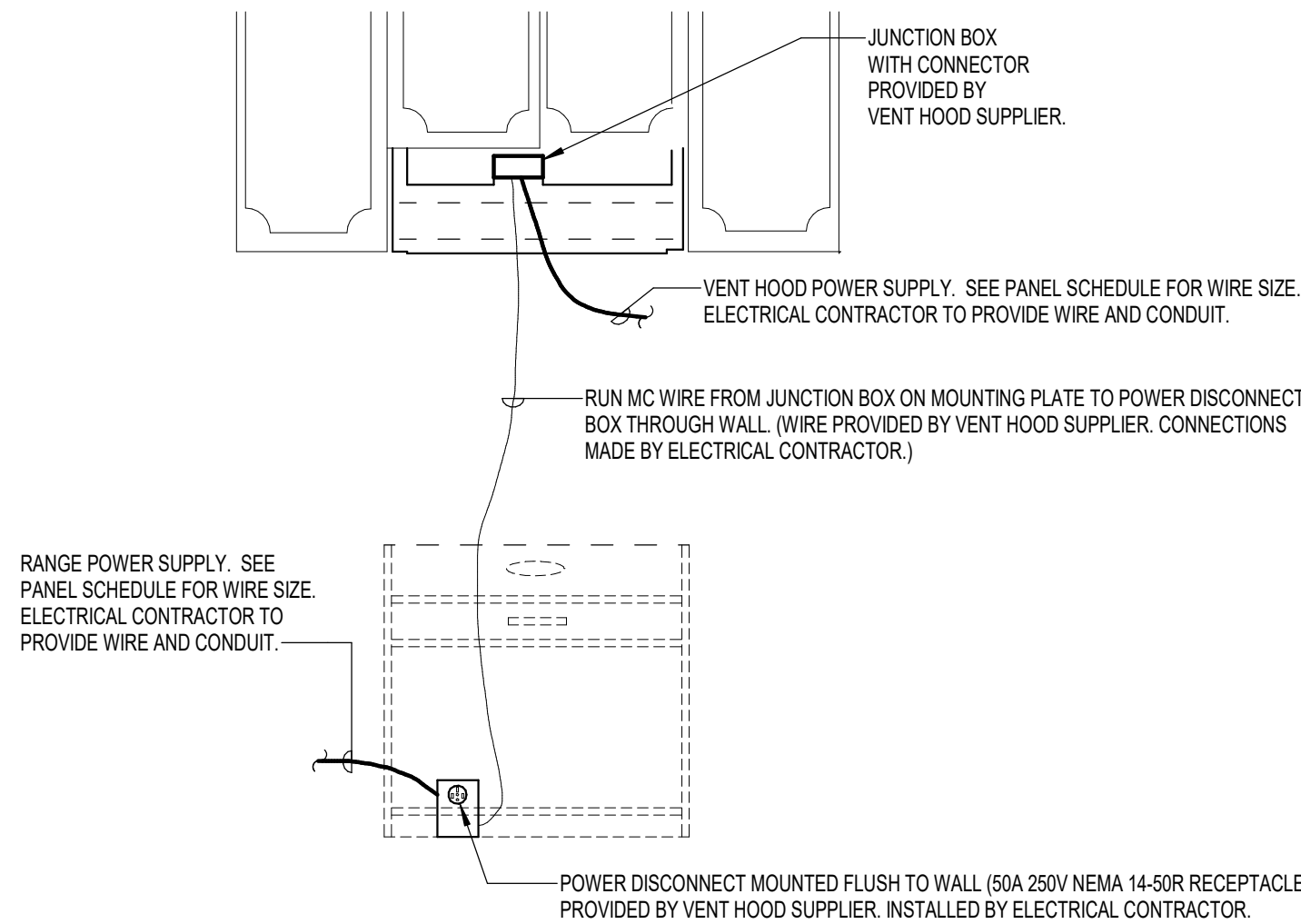
SEE SPECIFICATIONS FOR MATERIALS, COLORS SIZE LETTERING, ETC.
ATTACH PLAQUES USING INDUSTRIAL GRADE DOUBLE FACE ADHESIVE.
LABELING SHALL ADHERE TO NEC 408.4(B) SOURCE OF SUPPLY



2 | **DETAIL - EQUIPMENT SIGNAGE**
N.T.S.



4 | **DETAIL - FAN - CARBON MONOXIDE INTERCONNECTION**
N.T.S.



6 | **DETAIL - VENT HOOD**
N.T.S.

